

Arconic  
Architectural  
Products



SEE THE SPECTRUM OF

# POSSIBILITIES

Reynobond® Composite Material Stocking Color Chart



For architects and builders, few things are more important than the successful execution of a bold design. That's why so many rely on Reynobond® composite material to amplify the impact of their ideas. Our lightweight, formable and colorful coil-coated finishes are available in both standard and custom finish options—opening up a world of possibilities for even your most ambitious concepts. Dramatic curves, daring angles and unique shapes come to life with eye-catching appeal and superior performance. Add easy maintenance with up to a 30-year warranty and you have a design solution that can go as far as your specifications—and imagination—require.

## Bold Ideas Require Bold Finishes

Use this color chart as design inspiration for your next project. If you don't find the right shade, we're happy to produce individual custom colors upon request.



### Colorweld® 500/500XL Finishes

Our coil-coated Colorweld® 500 and Colorweld® 500XL finishes offer superior performance. From soothing neutrals to shimmering silvers, these premium low- to medium-gloss finishes feature advanced resins with 70% polyvinylidene fluoride (PVDF) that provide excellent flexibility, strength and weather resistance.



### Design Line™ Nature-Inspired Finishes

Inspired by Mother Nature, our Design Line™ finish system brings you a variety of striking options that mimic natural materials while providing all the performance benefits of Reynobond® composite material. These multi-layer-coat, advanced polymer finishes offer high resistance to aging, UV and corrosion that meets and exceeds their natural counterparts—delivering both beauty and brawn.



### Brushed Aluminum Finishes

Sleek, contemporary and highly attractive, our Brushed Aluminum finishes combine natural beauty with high performance. They are designed to meet the aesthetics and durability requirements of exterior use to create a natural look that distinguishes your buildings.



### Colorweld® 300 Finishes

Colorweld® 300 finishes offer a distinctive look across a wide range of opacities using an advanced 70% PVDF resin. Our stocked options give your buildings bright pops of red and orange, dramatic blues and blacks and sparkling metallics with finishes that are durable, colorfast and designed to withstand harsh conditions without losing their dazzling good looks.



### Duragloss® Finishes

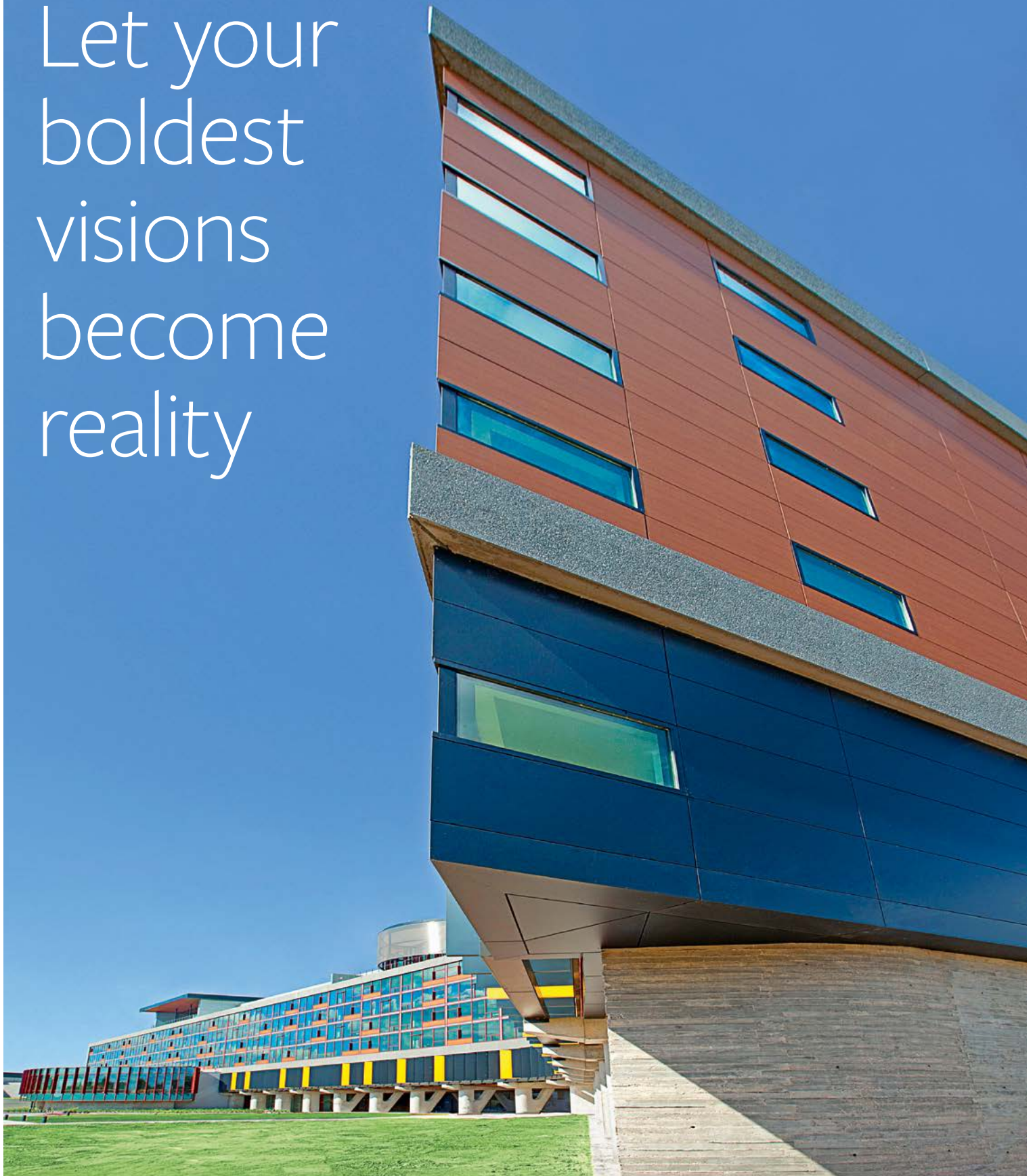
With our Duragloss® paint system, you can explore your most imaginative ideas. Its UV resistance, bright color capabilities and high-to-low gloss levels add up to a bold image with fewer maintenance costs over the life of the building.



### Anodized Finishes

With Anodized Reynobond® composite material, style goes more than skin deep. The anodized layer creates a harder, smoother surface with resistance to abrasion. Our Anodized composite material is lightweight and easy to fabricate, and has a great strength-to-weight ratio.

Let your  
boldest  
visions  
become  
reality





## Colorweld® 500

Series One | 2-Coat Solid Finishes | 30-year warranty | AAMA 2605




Series Two | Premium 2-Coat Mica Finishes | 30-year warranty | AAMA 2605



**Colorweld® 500XL** Compatible with PPG's DuraPrep® Prep™ 400 graffiti and overspray cleaner.

Series Three | Premium 3-Coat Metallic Finishes | 30-year warranty | AAMA 2605



 Environment-friendly cool-pigment finish available upon customer request.

Wood Finishes | 20-year warranty | AAMA 2604



COLONIAL RED



EMBALA BROWN



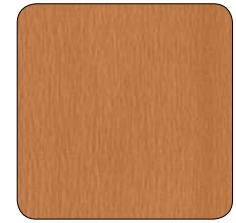
ITALIAN WALNUT



MAHOGANY BROWN



SCOTTISH OAK



SUNNY PEAR



ZEBRA



FRENCH WALNUT



TENDER OAK



ASHWOOD GRAY

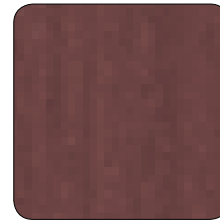
Stone Finishes | 20-year warranty | AAMA 2604



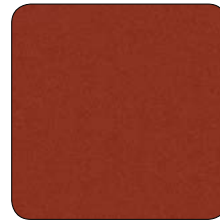
ACIERO CORTEN



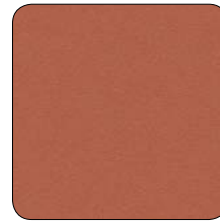
APOLLO STONE



RUSTED METAL



TERRA DI SIENA II



TERRA COTTA MINERAL II

Mineral Finishes | 20-year warranty | AAMA 2604

Concrete Finishes | 20-year warranty | AAMA 2604



STATELY CONCRETE



INDUSTRIAL CONCRETE



GRAPHITE



FROZEN SILVER

Textured Finishes | 20-year warranty | AAMA 2604

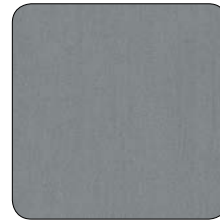
Patina Finishes | 20-year warranty | AAMA 2604



COPPER PATINA



RUST PATINA



ZINC PATINA

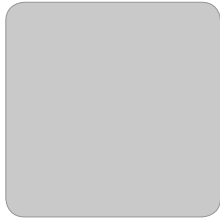


ZINC CHARCOAL

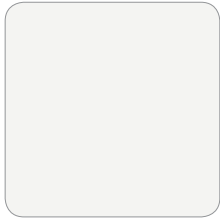
Due to the printing process, the colors depicted here may deviate from the actual colors available. Arconic Architectural Products, LLC (AAP) reserves the right to change or withdraw information contained herein without prior notice. Contact AAP for material samples.

## Duragloss® 5000<sup>1</sup>

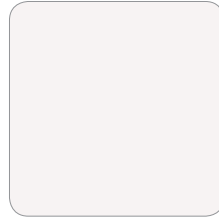
2-Coat Finishes | 20-year warranty | AAMA 2604



DG SILVER



BRITE WHITE



MATTE WHITE



PROGRAM BLACK



PROGRAM BLUE



PROGRAM WHITE

## Duragloss® 3000<sup>1</sup>

For other program specific finishes please contact AAP LLC customer service department.

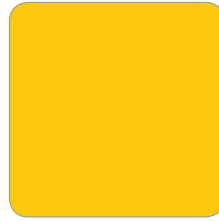
2-Coat and 3-Coat (Stripe) Finishes | 10-year warranty | AAMA 2604



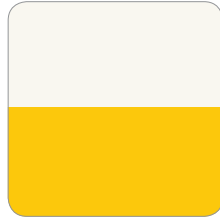
BRITE BLUE



BRITE GREEN



BRITE YELLOW



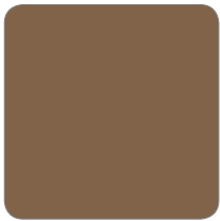
BRITE YELLOW/  
WHITE STRIPE



CLASSIC RED



CLASSIC WHITE



COBBLE BROWN



EASTMAN RED



MATTE BLUE



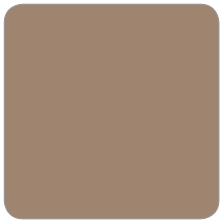
OUTRAGEOUS GREEN



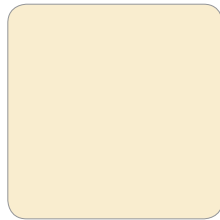
PATRIOT BLUE



PATRIOT RED



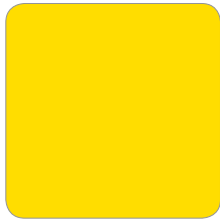
PORTABELLA



PROGRAM PEARL



PROGRAM RED



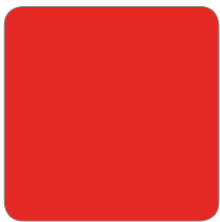
PROGRAM YELLOW



REGIONS GREEN



SAPPHIRE BLUE



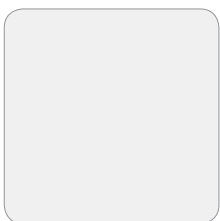
SCARLET RED



SHAMROCK GREEN

## Duragloss® 1000<sup>1</sup>

2-Coat Finishes | 5-year warranty | AAMA 2603



EASTMAN WHITE



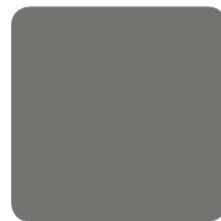
OYSTER

## Colorweld® 500<sup>1</sup>

Premium 2-Coat Finishes | 30-year warranty | AAMA 2605



CHAMPAGNE SILVER



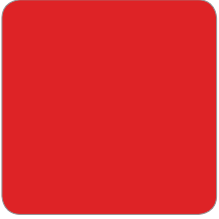
SUNSHINE GRAY



EASTMAN BLUE

# Colorweld® 300

2-Coat Solid Finishes | 20-year warranty | AAMA 2605



**BRILLIANT RED**



**ELEGANT BLACK**



**MIDNIGHT BLUE**



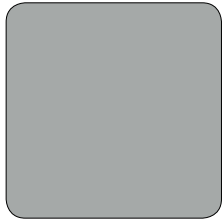
**STORMY GRAY**



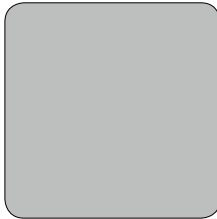
**WINTER WHITE**

## Brushed Aluminum<sup>2</sup> Compatible with PPG's DuraPrep® Prep™ 400 graffiti and overspray cleaner.

Clear Coat | 20-year warranty



**NATURAL LONG BRUSHED ALUMINUM**



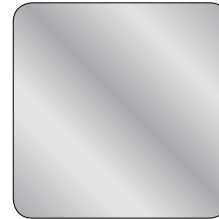
**NATURAL BRUSHED ALUMINUM**



**NATURAL BRUSHED ALUMINUM GRAY**

## Brite Mirror

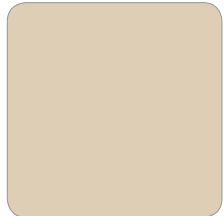
Clear Coat | 10-year warranty



**BRITE MIRROR**  
87% Reflectivity

## Anodized<sup>2,3</sup>

AA-M10C22A44 | AAMA 611 Class 1



**CHAMPAGNE**



**LIGHT BRONZE**



**MEDIUM BRONZE**

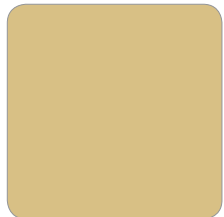


**DARK BRONZE**



**ELECTROLYTIC BLACK**

AA-M10C22A42 | AAMA 611 Class 1



**LIGHT GOLD**

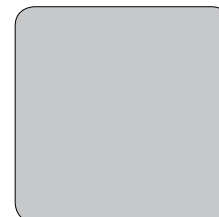


**MEDIUM GOLD**



**DARK GOLD**

AA-M10C22A41 | AAMA 611 Class 1



**CLEAR ANODIZED**

1 Please refer to stocking list at reynobond.com for stocking size availability. Minimum quantities may be required for 4MM FR production.

2 The appearance of Anodized and Brushed Aluminum finishes may vary with lot of production.

3 Available material stocked in mill finish and anodized to order.

Slight variations in color, gloss and texture can occur between different paint production batches. Paint variations within a specific color, especially for mica and metallic colors, can and do occur that are visible to the human eye, but are within industry tolerances.

# Finish Performance Properties

Property	Colorweld® 300/500	Colorweld® 500XL	Brushed Aluminum	Design Line™	Duragloss® 5000	Duragloss® 3000	Duragloss® 1000
Qualifying Standard	AAMA 2605	AAMA 2605	AAMA 2605	AAMA 2604	AAMA 2604	AAMA 2604	AAMA 2603
Number of Coating Layers	2-Coat	3-Coat	1-Coat	2-Coat or 3-Coat	2-Coat	2-Coat or 3-Coat	2-Coat
Available Gloss Range	Low to Medium	Low to Medium	Low to High	Low to Medium	Low to High	Low to High	Low to High
Relative Coating Durability	*****	*****	*****	****	****	***	**
Relative Color and Gloss Retention (UV Resistance)	*****	*****	*****	****	****	***	**

For more information or to request a color sample of our Reynobond® composite material, contact your local sales manager or visit [reynobond.com](http://reynobond.com).

## DISCLAIMER

Laws and building and safety codes governing the design and use of AAP's products, and specifically aluminum composite materials, vary widely. It is the responsibility of the owner, the architect, the general contractor, the installer and the fabricator/transformer, consistent with their roles, to determine the appropriate materials for a project in strict conformity to all applicable national, regional and local building codes and regulations.

Information contained herein or related hereto is intended only for evaluation by technically skilled persons, with any use thereof to be at their independent discretion and risk. AAP and its affiliates shall have no responsibility or liability for results obtained or damages resulting from such use. AAP grants no license under, and shall have no responsibility or liability for infringement of, any patent or other proprietary right. Nothing in this document should be construed as a warranty or guarantee by AAP, and the only applicable warranties will be those set forth in AAP acknowledgment or in any printed warranty documents issued by AAP. The foregoing may be waived or modified only in writing signed by an AAP officer.



## ARCONIC ARCHITECTURAL PRODUCTS LLC

50 Industrial Boulevard  
Eastman, GA 31023-4129  
Tel. 1.800.841.7774

[samples.literature@arconic.com](mailto:samples.literature@arconic.com)  
[reynobond.com](http://reynobond.com)

©2021 Arconic Architectural Products, LLC  
Form No. 20-0003